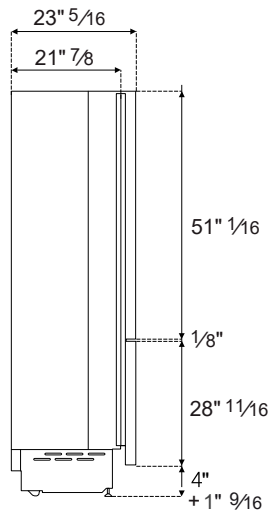
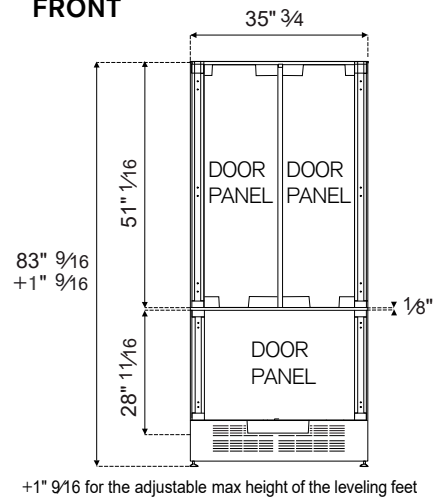


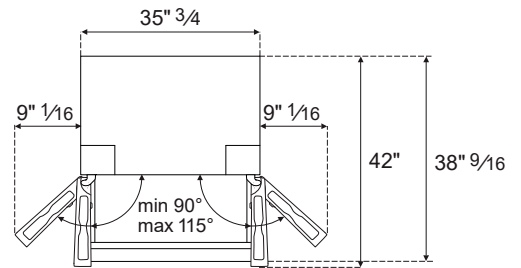
SIDE



FRONT

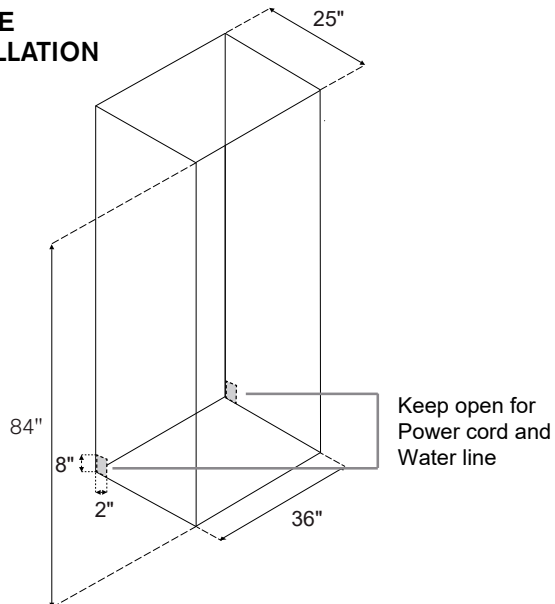


TOP



CUTOUT DIMENSIONS

SINGLE INSTALLATION

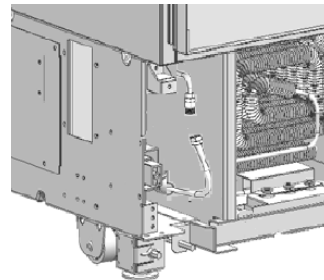
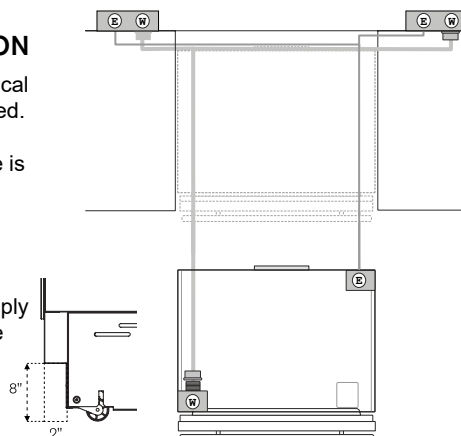


ELECTRICAL & WATER CONNECTION

A properly-grounded, electrical receptacle should be installed. A separate circuit breaker servicing only this appliance is recommended.

Do not use a multi-purpose socket with other electrical appliances.

To connect to the water supply system, use a $\frac{1}{4}$ " waterline with accessible shut-off valve with a length of 60".



INSTALLATION REQUIREMENTS

If the appliance(s) is not connected through the side profile trims to secured cabinetry, anti-tip brackets must be installed.

The max weight for the cabinet panel is 44 lbs (20kg) for the refrigerator doors and 20 lbs (9kg) for the freezer door.

For a flush installation, cabinet panels should not be thicker than $\frac{3}{4}$ ".